

HIGH SHOALS

See Reverse Side
for Floor Plans

- 1½ story on an unfinished basement with 3 bedrooms/2½ baths and a loft
- 2,233 heated square feet, 2,634 unheated square feet
- An optional finished basement adds 2nd master suite with bath, family room, and 1,171 heated square feet
- Covered screen patio & open decks
- Covered porches
- 6x12 Logs on main level with a Limited Lifetime Warranty
- Log siding, cedar shake siding or board and batten on second level
- Heavy Timber open design
- Porte Co-Chere
- Premium high performance, Low-E windows and doors
- Conventional framed or pre-engineered I-joint roof framing system
- 30-year architectural shingles or 25 year ribbed metal roofing
- Premium door and window hardware

©2015 Walker Top Log Homes

updated 5/6/15



In Partnership With ...



675 S Old Piedmont Highway
Greenville, SC 29611

office 864-220-2884 • fax 864-220-2818
email Info@WalkerTop.com • www.WalkerTop.com

HIGH SHOALS

Square Foot Totals

1st Floor = 1,440 ft²
 2nd Floor = 793 ft²
 Optional Basement = 1,171 ft²

Total Heated ft² = 3,404 ft²

Basement = 269 ft²

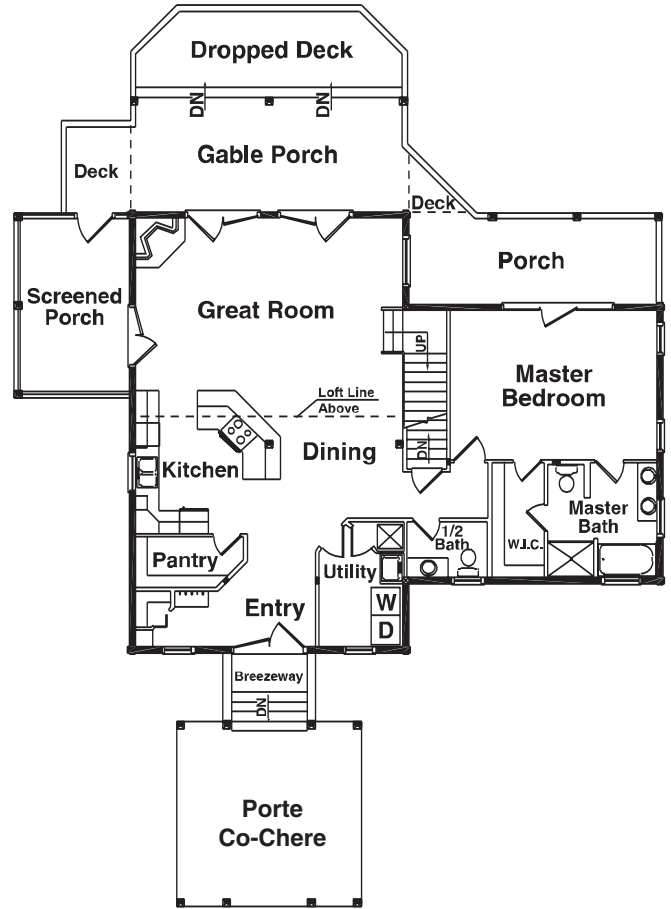
Deck = 242 ft²

Porch = 656 ft²

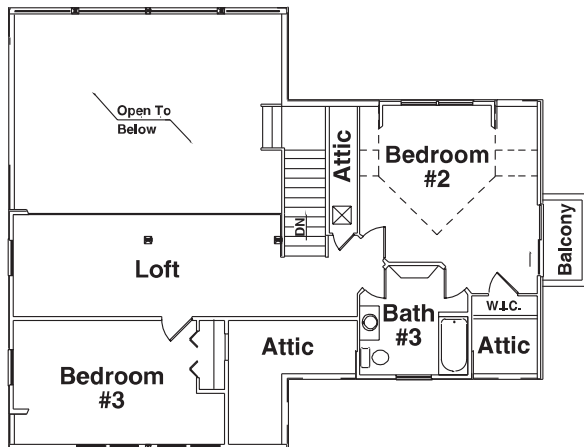
Balcony = 40 ft²

Total Unheated ft² = 1,207 ft²

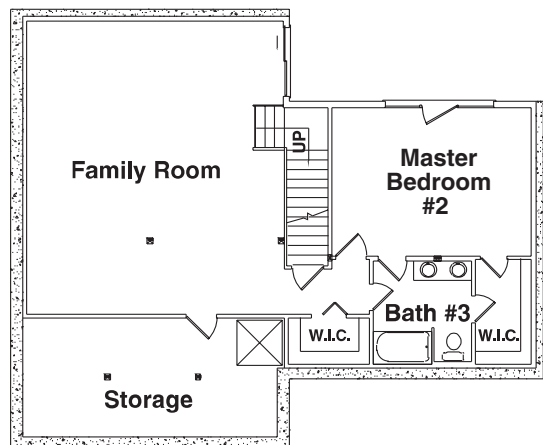
1st Floor Plan



2nd Floor Plan



Optional Basement Floor Plan



©2015 Walker Top Log Homes

Artistic rendering of model house and floor plans, subject to change without notice or obligation.

updated 5/6/15



In Partnership With ...



675 S Old Piedmont Highway
 Greenville, SC 29611

office 864-220-2884 • fax 864-220-2818
 email Info@WalkerTop.com • www.WalkerTop.com